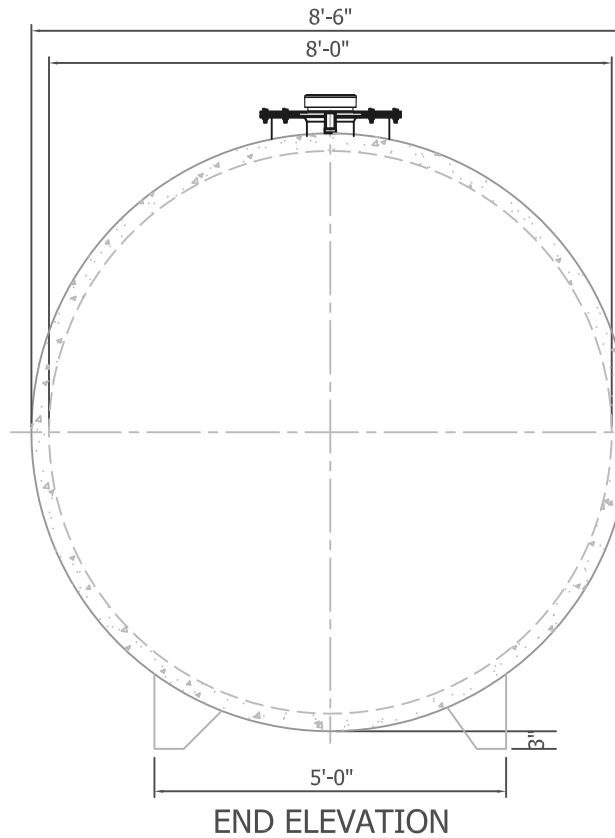
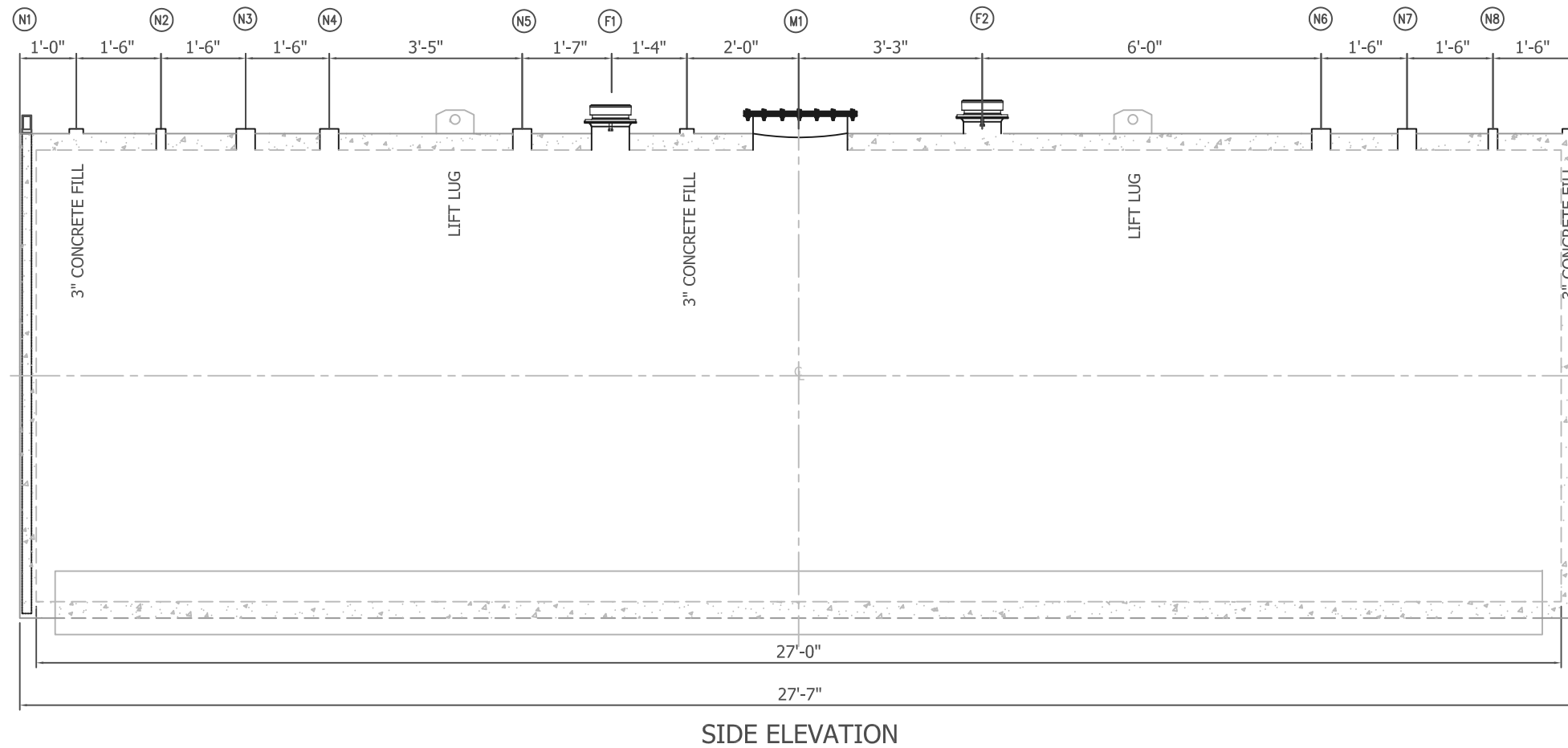


FNAME

REVDATE

USER



GENERAL SPECIFICATIONS			
1.	ORDER QUANTITY: 1 TANKS		
2.	NOMINAL CAPACITY: 10,000 GALLONS		
3.	VESSEL OPERATING PRESSURE: ATMOSPHERIC		
4.	VESSEL OPERATING TEMPERATURE: AMBIENT		
5.	CONSTRUCTION: DOUBLE-WELDED BUTT JOINT		
6.	MATERIAL: MILD CARBON STEEL		
7.	TEST: 5 PSI		
8.	APPROVED LABELS: SWRI 2085		
9.	EXTERIOR COATING: SSPC-6 BLAST, PRIMER COAT & PAINT WHITE URETHANE		
10.	24" MANHOLE W/FLANGED BOLTED COVER		

GENERAL DIMENSIONS			
CAPACITY	DIAMETER (ID)	LENGTH (ID)	LENGTH (OD)
10,000 GAL	96"	27'	27' 7"

GAUGE/THICKNESS							
INNER HEAD	INNER SHELL	OUTER HEAD	OUTER SHELL	SHELL 4	SHELL 5	SHELL 6	TOP
1/4"	1/4"	1/4"	1/4"	-	-	-	-

FITTING DETAIL			
N1	INTERSTITIAL GAUGE	TOP	2" FNPT
N2	VENT	TOP	2" FNPT
N3	GAUGE	TOP	4" FNPT
N4	GAUGE	TOP	4" FNPT
N5	GAUGE	TOP	4" FNPT
N6	FILL	TOP	4" FNPT
N7	DISPENSE	TOP	4" FNPT
N8	GAUGE	TOP	2" FNPT
F1	EMERGENCY VENT	TOP	8" FLNG
F2	EMERGENCY VENT	TOP	8" FLNG
M1	24" MANHOLE	TOP	24" FLNG

NO.	REVISION/ISSUE	DATE

CUSTOMER INFORMATION
BHT620210

DRAWN BY: CRP	DRAWING NUMBER: TANK #1
REVIEWED BY: MEJ	DRAWING DATE: 03/15/14
SCALE: NTS	QUOTE NUMBER: BHT620210
CAD FILE NAME: 10000 GAL FG BHT620210.DWG	


 Corporate Centre 200
 PO Box 160
 Marlon, IA 52302-0160
 T 319.377.6357
 F 319.377.0075
 www.acterragroup.com
 info@acterragroup.com

DISCLAIMERS
 THIS DRAWING IS THE PROPERTY OF ACTERRA GROUP, INC. AND IS SUBMITTED AS A CONFIDENTIAL DISCLOSURE. ALL RIGHTS TO REPRODUCE THIS DRAWING AND THE ARTICLES THEREIN ARE EXPRESSLY RESERVED. THIS DOCUMENT AND ITS CONTENTS SHALL BE CONSIDERED INTELLECTUAL PROPERTY OF THE ACTERRA GROUP, INC., THEREFORE, THE USE OF THE DOCUMENT AND ITS CONTENTS ARE STRICTLY PROHIBITED WITHOUT THE WRITTEN APPROVAL OF THE ACTERRA GROUP, INC. THE SIZES, DIMENSIONS, THICKNESS, ETC., ARE INTENDED TO REPLACE OR REPRESENT NECESSARY ENGINEERING CALCULATIONS. THE SIZES, DIMENSIONS, THICKNESS, ETC., ARE NOT TO SUPERSEDE EXISTING TANK LAWS, REGULATIONS OR STANDARDS.

APPROVAL	
CUSTOMER: _____	DATE: _____