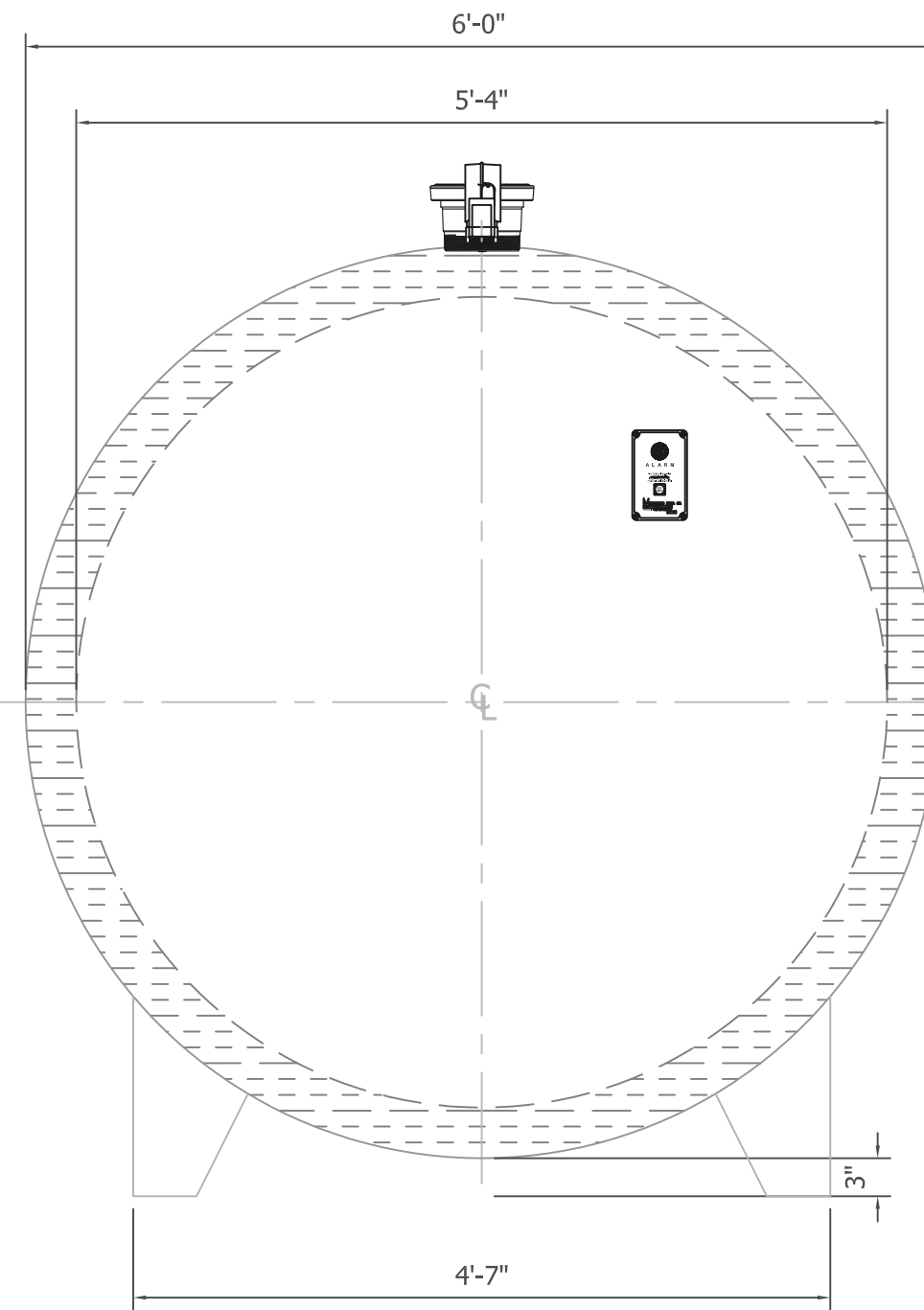


SIDE ELEVATION



END ELEVATION

GENERAL SPECIFICATIONS

1. ORDER QUANTITY: 1 TANK
2. NOMINAL CAPACITY: 1,500 GALLONS
3. VESSEL OPERATING PRESSURE: ATMOSPHERIC
4. VESSEL OPERATING TEMPERATURE: AMBIENT
5. CONSTRUCTION: DOUBLE-WELDED BUTT JOINT
6. MATERIAL: MILD CARBON STEEL
7. TEST: PER UL142, SWRI
8. APPROVED LABELS: UL142, STI FLAMESHIELD
9. EXTERIOR COATING: SANDBLAST, PRIMER, AND PAINT WHITE URETHANE
10. TANK ACCESSORIES TO BE PROVIDED AND INSTALLED BY OTHERS (UNLESS NOTED ELSEWHERE)

GENERAL DIMENSIONS

CAPACITY	DIAMETER	LENGTH	WEIGHT
1,500 GAL	5'-4"	9'-8"	11,700 LBS

GAUGE/THICKNESS

OUTER HEAD	OUTER SHELL	INNER HEAD	INNER SHELL
7 GA	7 GA	7 GA	7 GA

FITTING DETAIL

TAG NO.	DESCRIPTION	LOCATION	NOZZLE SIZE
N1	INTERSTITIAL GAUGE	TOP	2" FNPT
N2	FILL	TOP	4" FNPT
N3	GAUGE	TOP	2" FNPT
N4	EMERGENCY VENT	TOP	6" FNPT
N5	EMERGENCY VENT	TOP	6" FNPT
N6	NORMAL VENT	TOP	2" FNPT
N7	DISPENSE	TOP	4" FNPT

NO.	REVISION/ISSUE	DATE

CUSTOMER INFORMATION	
BHT620135	

DRAWN BY: CRP	DRAWING NUMBER: TANK #1
REVIEWED BY: MEJ	DRAWING DATE: 03/15/14
SCALE: NTS	QUOTE NUMBER: BHT620135
CAD FILE NAME: 1500 GAL FG BHT620135.DWG	


 Corporate Centre 200
 PO Box 160
 Marion, IA 52302-0160
 T 319.377.6357
 F 319.377.0075
 www.acterragroup.com
 info@acterragroup.com

DISCLAIMERS

THIS DRAWING IS THE PROPERTY OF ACTERRA GROUP, INC. AND IS SUBMITTED AS A CONFIDENTIAL DISCLOSURE. ALL RIGHTS TO REPRODUCE THIS DRAWING AND THE ARTICLES THEREIN ARE EXPRESSLY RESERVED. THIS DOCUMENT AND ITS CONTENTS SHALL BE CONSIDERED INTELLECTUAL PROPERTY OF THE ACTERRA GROUP, INC., THEREFORE, THE USE OF THIS DOCUMENT AND ITS CONTENTS ARE STRICTLY PROHIBITED WITHOUT THE WRITTEN APPROVAL OF THE ACTERRA GROUP, INC. THE SIZES, DIMENSIONS, THICKNESS, ETC., ARE NOT INTENDED TO REPLACE OR REPRESENT NECESSARY ENGINEERING CALCULATIONS. THE SIZES, DIMENSIONS, THICKNESS, ETC., ARE NOT TO SUPERSEDE EXISTING TANK LAWS, REGULATIONS OR STANDARDS.

APPROVAL

CUSTOMER: _____
 DATE: _____

FNAME

REVDATE

USER