

**LINCOLN** **100**  
**YEARS**®

Celebrating Our First Century In Business

## **PROFESSIONAL 18-VDC & 120-VAC POWERLUBER®**

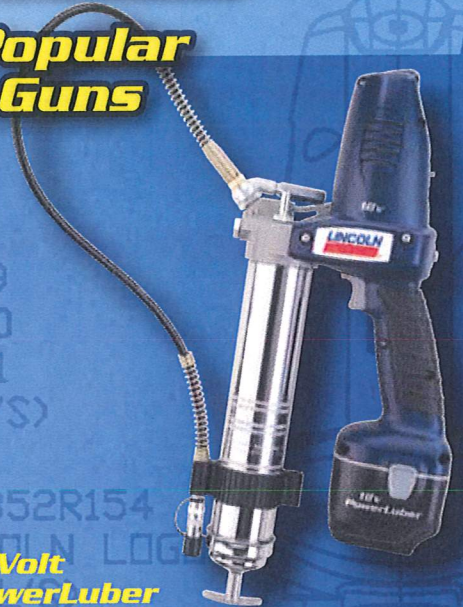
**The Newest Additions to the Popular  
PowerLuber Family of Grease Guns**

### **18V POWERLUBER**

- High output 18V motor delivers excellent performance in heavy-duty applications
- New 18V motor and battery technologies combine to provide outstanding run-time
- Exceptional performance in high-pressure applications
- 2-speed transmission provides high-volume grease flow option
- Versatility means one tool for all lubrication requirements

### **120V CORDED GREASE GUN**

- 120V motor provides the highest torque values in its class
- Unmatched for power, longevity and performance
- Variable speed trigger combines with the 2-speed transmission for excellent flow control
- Excellent for refilling grease reservoirs
- Excellent alternative to pneumatic lube tools



**18-Volt  
PowerLuber**



**120-Volt  
PowerLuber**

**100 Years . . . And Getting Better!**

# LINCOLN 100 YEARS<sup>®</sup>

Celebrating Our First Century In Business

- Lincoln's PowerLubers are available in a variety of designs to meet a wide range of application and budget requirements.
- Ergonomically designed and balanced to reduce fatigue and increase productivity.
- High-strength composite body with metal gear and pump housing provide outstanding durability without weight penalty.
- Patented pumping mechanism and high tolerance piston to bore clearances provide unmatched efficiencies.



**Model  
1842**

SERIES	PERFORMANCE SERIES
Models	1842-1844
Voltage	18.0v
Transmission	2-Speed – High Volume & High Pressure
Grease Flow Indicator	Patented Stroke Counter
Output Pressure	7,500
Output Rate*	3.0 oz/min (L) - 9.0 oz/min (H)
Cartridges Dispensed Per Charge **	8-10
Overload Protection	Circuit Breaker and Pressure Relief Valve
Bulk Filler Valve	Yes
Quick Vent - Air Purge Valve	Yes
Hose Type	30" High-Pressure with Dual Spring Guards and 5852 Coupler
Charger - Voltage Range	14v-18v
Charge Time	45 min
Compact Carrying Case	Yes
Hose/Coupler/Cord Clip	Yes

\* @ 1,000 psi backpressure, NLGI #2, 72°F

\*\* Average dispense—many variables may increase/decrease volume including grease type, ambient temperature, back pressure, cycle time.

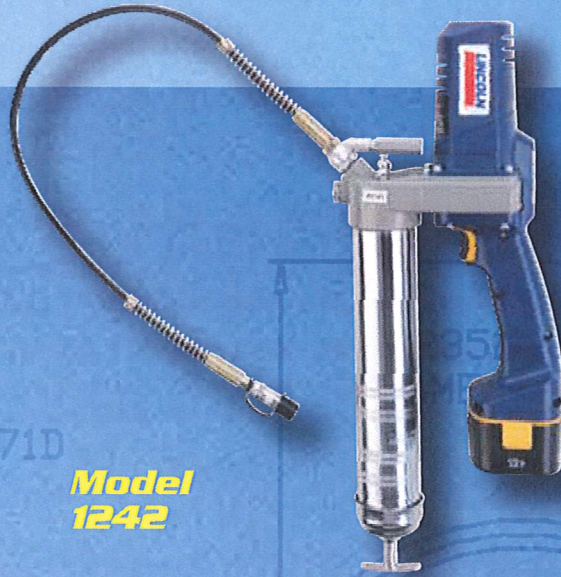
NOTE: 1844, 1444 and 1244 include a second battery



# BATTERY OPERATED



**Model  
1442**



**Model  
1242**

## HEAVY-DUTY SERIES

1442-1444

14.4v

2-Speed – High Volume & High Pressure

Patented Stroke Counter

7,500

3.0 oz/min (L) - 8.5 oz/min (H)

5-7

Circuit Breaker

Yes

Yes

30" High-Pressure with Dual Spring  
Guards and 5852 Coupler

14v-18v

45 min

Yes

Yes

## STANDARD SERIES

1242-1244

12.0v

Single Speed – High Pressure

None

6,000

2.9 oz/min

3-5

Pressure relief valve

Not Included

Single Button Purge Valve

30" High-Pressure with Dual Spring  
Guards and 5852 Coupler

12v

60 min

Yes

No



## **PNEUMATIC**



**Model  
1162**

## **ELECTRIC**



**Model  
AC2440**

### **ULTRA PNEUMATIC**

**1162**

**Air Operated (40-150psi)**

**Patented Air Motor with  
Variable Speed Trigger**

**None**

**6,000 @ 150 psi air input**

**10.0 oz/min**

**Unlimited**

**Not required**

**Yes**

**Yes**

**30" High-Pressure with Dual Spring  
Guards and 5852 Coupler**

**N/A**

**N/A**

**No**

**Yes**

### **AC PERFORMANCE SERIES**

**AC2440**

**120v**

**2-Speed Transmission with  
Variable Speed Trigger**

**Patented Stroke Counter**

**7,000**

**3.6 oz/min (L) - 8.0 oz/min (H)**

**Unlimited**

**Pressure Relief Valve**

**Yes**

**Yes**

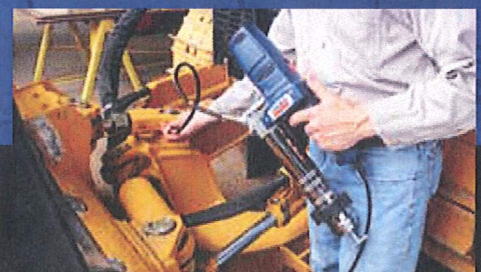
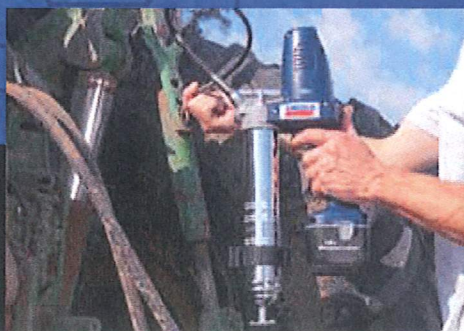
**30" High-Pressure with Dual Spring  
Guards and 5852 Coupler**

**N/A**

**N/A**

**Yes**

**Yes**



# Quality Lincoln Accessories

## Batteries

- Model 1201 - 12 volt
- Model 1401 - 14.4 volt
- Model 1801 - 18 volt



Model 1201



Model 1401



Model 1801

## Model 1410



## 110 - 120V A/C Chargers

- Model 1210 - 12 volt charger
- Model 1410 - 14.4 volt & 18 volt charger

## DC Field Chargers

- Model 1215/1215A - 12 volt charger
- Model 1415A - 14.4 volt charger

## Model 1415A



## Models 1218, 1236



## High Pressure Hoses

- 18 inch - 36 inch
- Models 1218, 1224, 1230, 1236

Construction  
Fleet/Truck

Industrial  
Agriculture

Automotive



## Shoulder Strap

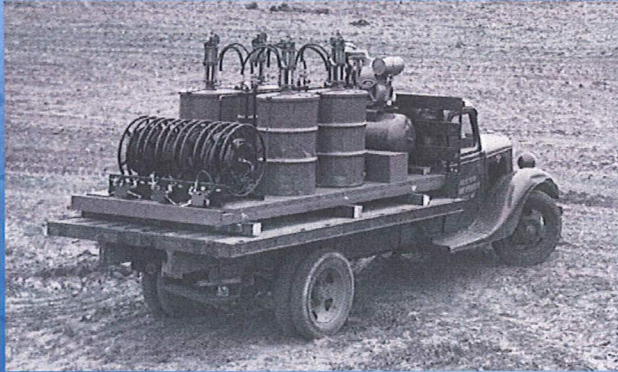


Model 1414

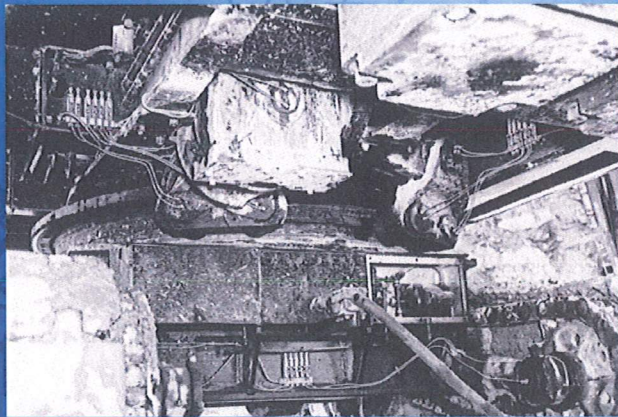


Celebrating Our First Century In Business

**Lincoln –  
The Industry Leader  
Since 1910**

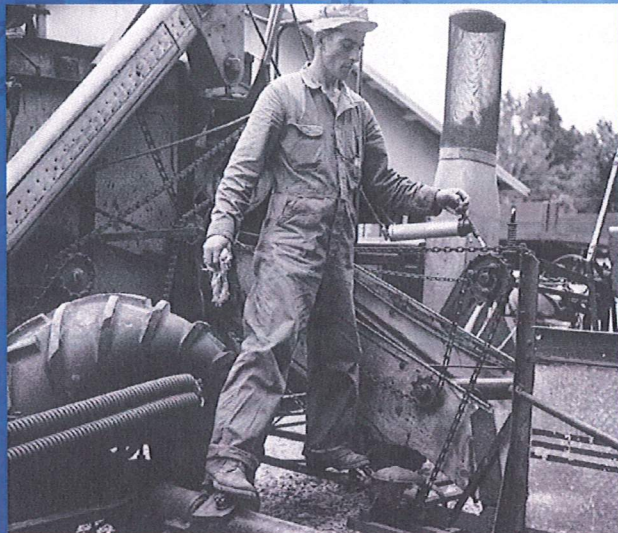


Continually satisfying our customers with the world's best lubrication equipment and pumping systems has made Lincoln the largest and most successful company in our field. For almost a century, companies have relied on our technical and quality leadership; our world-class manufacturing and customer service, and our vast network of distributors and support facilities.



**Lincoln's Global  
Distribution Network  
Is The Best In  
The Industry**

Lincoln distributors provide their customers with a wide variety of lubrication equipment as well as consistent delivery and service. From small, service-oriented companies to large, integrated suppliers, Lincoln distributors meet the expectations of every customer with just the right level of service and value. You can depend on Lincoln to continue to provide top quality lubrication solutions through the best distribution network in the United States and around the world.



Lincoln Industrial Corp.  
One Lincoln Way  
St. Louis, MO 63120-1578

Phone 314.679.4200  
Fax 314.679.4359  
[www.lincolnindustrial.com](http://www.lincolnindustrial.com)

Form 444042 (9/09)  
© Copyright 2009  
Printed in U.S.A.