

# Red Jacket

Products and Solutions that  
Optimize Fuel Flow and Profits





Red Jacket has the resources that help customers with flow requirements, and site optimization. We take a comprehensive approach to product design that delivers the fuel flow you need, and also factors in important cost considerations such as the equipment's serviceability, safety, ease of upgrades, and impact on environmental compliance.

# Reliable Products and Resources

## to Help Sites Reach Peak Performance

### Site & Flow Planning

At Red Jacket we focus on three keys to fueling profitability.

- Providing the information you need to choose a solution for your specific site
- Helping you ensure environmental compliance and fueling system uptime
- Reducing your total cost of ownership to maximize your fueling profit potential

### Flow Planning Improves Site Performance

Improved flow isn't just about the size of your pumps. Understanding how your site works, and the impact of other equipment on flow rates, can help you make the right equipment choices.

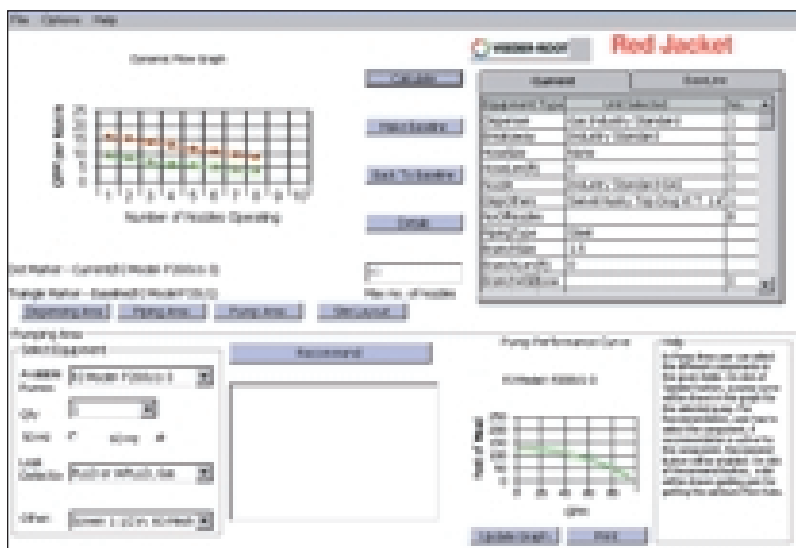
You want to work with a company who understands the entire site, and recognizes that product performance in the test lab has little bearing on real-life results. A company with a full range of products to control flow and reach maximum output limits at the pump so you know that the solutions they recommend fit your business needs, not theirs. That company is Veeder-Root/Red Jacket, your Flow Resource.

### Red Jacket's Flow Optimization Software Guide

Planning flow patterns at a site is an important step towards top performance. Veeder-Root has developed a comprehensive software guide that takes you through the variables of a fueling site. Intuitive and easy-to-use, Red Jacket Flow Optimization Software uses information and equipment specs to identify the correct STP model to optimize flow.

### Knowledgeable Support is Only a Phone Call Away

If your site has unique characteristics or equipment configurations that our Flow Optimization Software doesn't support, or that require specialized knowledge, our application personnel on the Red Jacket Flow Hotline are available to help. Contact them at our 800# in the U.S., or call your local Veeder-Root office.

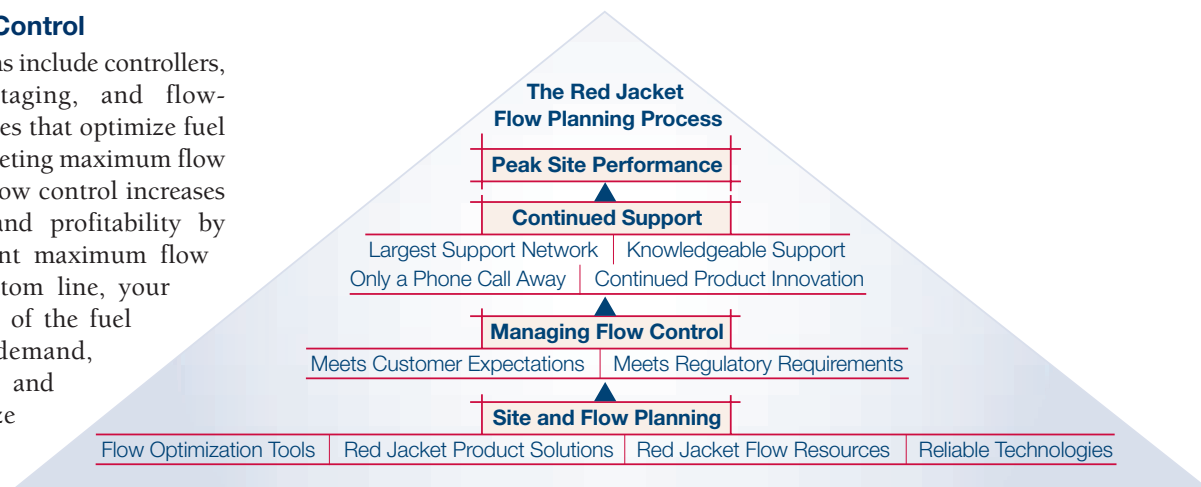


Red Jacket Flow Optimization Software.

# Consistent Flow That Meets Everyone's Standards

## Managing Flow Control

Flow control systems include controllers, demand based staging, and flow-limiting technologies that optimize fuel flow rates while meeting maximum flow rate regulations. Flow control increases fuel throughput and profitability by providing consistent maximum flow at all nozzles. Bottom line, your site can deliver all of the fuel your customers demand, maximizing turns and traffic to squeeze every drop out of fueling profits.



## Flow Control Comparison

	RJ 2HP Variable Speed	RJ 2HP Fixed Speed
<b>Flow Rate*</b>		
Maximum Flow Rate	95 GPM	91 GPM
Manifolded System Max Flow Rate	172 GPM	168 GPM
Optimum Nozzle Flow Rate**	Varies by Nozzle	Optimized for all Nozzles
<b>10 GPM Flow Control</b>		
Requires a Flow Limitation at the Nozzle***	Possible	Yes
Dispenser Flow Control <sup>(1)</sup>	Best	Best
Mechanical Flow Limiter <sup>(2)</sup>	Option	Option
<b>Total Cost of Ownership</b>		
Equipment Purchase Cost	Higher	Lower
Installation Cost	Higher	Lower
Maintenance Costs	Higher	Lower
Power Efficiency	Equal	Equal
Power Use at Max Flow Rate****	2598 watts	2587 watts

\* As measured in third party tests at STP discharge head

\*\* Variable speed technology may not optimize flow rates at every fueling location because flow rates are calibrated only at the first nozzle

\*\*\* Variable speed technology calibrated at one nozzle may not meet the 10 GPM maximum flow rate requirement at all nozzles

\*\*\*\* As measured in third party tests

### (1) What is Dispenser Flow Control?

Dispenser Flow Control systems measure and adjust flow rates at each individual nozzle. Dispenser-based flow control systems can be used with either fixed or variable speed submersible pumps.

### (2) What is a Mechanical Flow Limiter?

A Mechanical Flow Limiter is a device placed on the line to limit flow to each individual dispenser. [800.289.7371](tel:800.289.7371) Acterra Group, Inc.

# High Volume Site Considerations

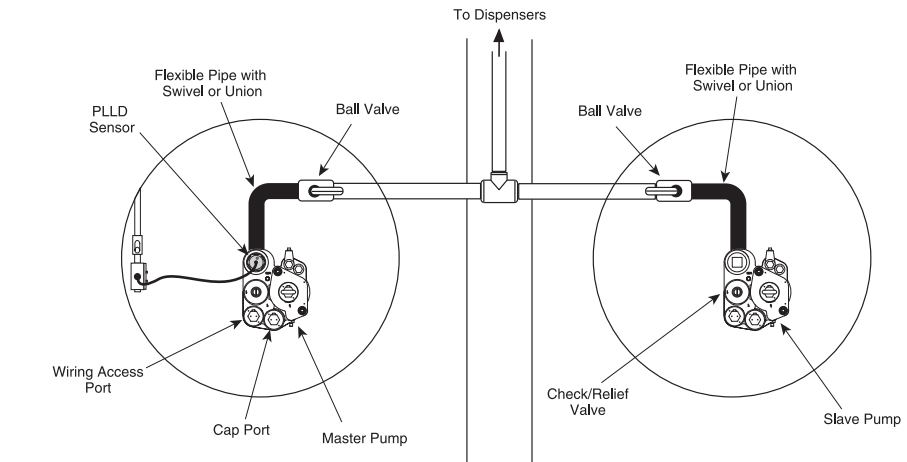
High volume sites pose special opportunities for improved flow rates. These sites require faster fueling cycles and more customer turns in order to maximize return on the significant site investment.

## Pump upgrades:

Upgrading the size (HP rating) of your pumps can have a substantial benefit at high volume sites. A simple upgrade from a 1 1/2 HP to a 2 HP pump can increase flow by over 22% when 8 nozzles are operating. Over the course of a 3-hour peak period that can translate to an additional 381 gallons of fuel pumped.

## Manifolded systems:

Manifolding two or more pumps together provides redundancy and system uptime even if one pump requires service, as well as the ability to achieve higher flow rates when a large number of nozzles are open at the same time.



Manifolded systems provide higher flow rates and improved uptime.

Another benefit of manifolded systems is superior inventory management. At sites using product blending, a manifolded system will ensure that all three products keep flowing, even if one pump fails. During “fueling rush hours”

siphon systems often can’t transfer fuel fast enough to avoid product run-out. A manifolded system will overcome this problem and ensure that product is available throughout peak fueling periods.

# Submersible Turbine Pumps Designed to Meet Your Needs

## Red Jacket Makes Sense

For over 40 years the name Red Jacket has become synonymous in the petroleum industry with a range of high-quality, high-performance products. Red Jacket has the largest installed base of submersible pumps in the industry.

## Fixed Speed Pumps

Fixed speed pump control is a simple technology, with a history of reliable performance and system uptime.

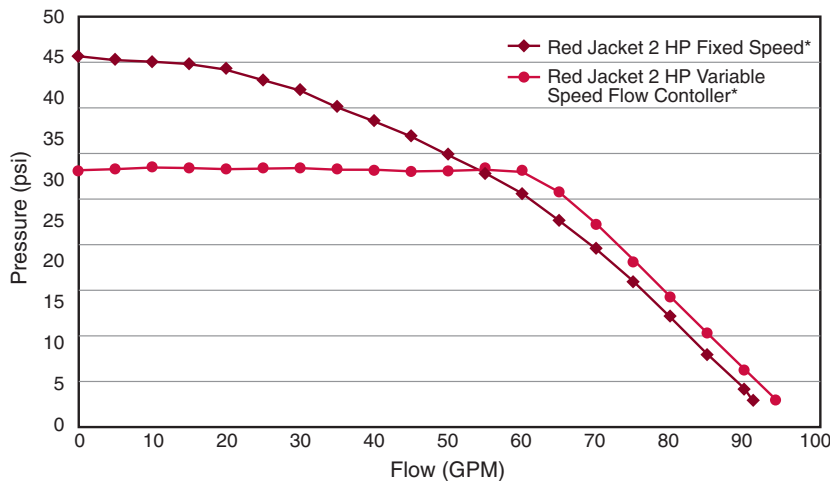
Fixed speed pump control is cost effective. The initial cost of fixed speed

equipment is lower than variable speed options, as is the total cost of ownership.

## Variable Speed Pumps

Variable speed pumps are designed to measure demand and control the speed of the pump, allowing it to spin faster as demand requires. Variable speed pumps allow for the use of higher horsepower (HP) pumps to meet peak demand without exceeding regulated maximum flow rates.

Whichever Red Jacket STP technology you choose, our sales and service organization will be there to support you, anywhere in the world.



\* As measured in third party tests at STP discharge head.

# Submersible Turbine Pumps



## The Red Jacket Submersible Turbine Pump

*Advanced environmental protection, serviceability, safety and flow*

### Performance Benefits

- Available fixed and variable speed
- Lowest pressure drop across the packer manifold optimizes flow with any sized motor

### Environmental Benefits

- Service spill elimination
  - Check valve design
  - Spill-free extractable
- Prevents false alarms and downtime
  - Vacuum Sensor Siphon System
- Environmental compliance without fuel flow restrictions
  - Integrates with V-R PLLD systems

- Wide range of fuel compatibility
  - Diesel; 100% gasoline; 80% gasoline with 20% TAME, ETBE, or MTBE; 0-100% Ethanol; 0-100% Methanol

### Service and installation benefits

- Quick, simple and safe yoke assembly
- Easy to service and install extractable
- Manifold design flexibility for vertical or horizontal discharge
- Built-in contractor's box eliminates need for yoke adjustments



## Maxxum Big Flo

*Maximum serviceability, safety and performance*

### Performance

- Highest flow rate of any 6" fixed speed STP
- Redesigned flow path reduces flow restrictions

### Environmental

- Compatible with Veeder-Root PLLD
- Vapor recovery pump driving port
- Transducer port for electronic leak detection

### Service and installation benefits

- Easy and safe electrical yoke disconnect
- Easy termination of pump wiring in conduit box
- Quick removal of extracta pump head
- Quick accessibility of check valve

## Red Jacket is Your Flow Resource for Alternative Fuels

Red Jacket is prepared to help our customers meet local or regional requirements for reduced air emissions, or your company's desire to utilize alternative fuels. Our AG pump product lines are designed to handle E-85 fuel formulations and can handle alcohol concentrations of up to 100%

If you're looking for a safe, efficient system for pumping LPG we offer the best LPG pump in the industry. Contact us for more information on our flow solutions for alternative fuels.



## Red Jacket Premiere LPG Submersible Pump

*The high performance pump for a cleaner environment*

### Performance

- High differential pressure capability for guaranteed flow performance with various LPG mixtures
- Certified design explosion-proof submersible electric motor
- Multi-stage centrifugal pumping system for reduced power consumption

### Service and installation benefits

- Bearing Cooling and Lubrication System for longer life, lower maintenance
- Split pump/motor design for easy installation and maintenance

Made for  
Alternative  
Fuels

# Controllers

---



## Red Jacket Variable Speed Flow Controller

*A better approach to variable speed pumping*

### Performance

- Flexible control when used in manifolded systems
- Accurate flow control in any site configuration using fuel line pressure
- More flow than competitive products when you need it most
- 45°C operating temperature

### Service and installation benefits

- Designed to save installation costs when integrated with V-R TLS-350 PLLD
  - Doesn't require intrinsically safe wiring from control box to pump
  - Meets FCC guidelines
  - Measures and maintains line pressure
  - Integrates seamlessly with V-R PLLD
- 



## IQ Control Box

*Easy to use, easy to install control for manifolded pump systems*

### Performance

- Provides motor protection from dry run conditions
- Protects wiring and controls from locked rotor or high currents
- Monitors site power conditions to ensure uninterrupted fueling and long motor life

### Service and installation benefits

- Single press and hold button for easy calibration
  - Easy-to-use wiring terminal with familiar labeling
  - Easily retrofitted to existing locations
- 



## Isotrol 1-8

*The most versatile dispenser handle signal isolation system available today*

### Performance

- Isolates the handle signals between each dispenser
- Isolates and protects individual dispensers from wiring shorts or phasing issues
- Isolates and protects technicians from dangerous feedback during service

### Service and installation benefits

- Dedicated Automatic Tank Gauge (ATG) line leak output and coil terminals are labeled for easy wiring and compatibility
- May be used with Red Jacket's Submersible Turbine Pump, Big Flo Pump or IQ Control Box, or as a "stand alone" with on-board 30-amp power relay
- Easily retrofitted to existing locations

## Accessories

---



### Veeder-Root PLLD Pressurized Line Leak Detection System

*Protect your investment while maximizing fuel sales*

#### Performance

Increased flow rate saves you money

- .5 GPM per nozzle higher flow rate vs. MLLD
- 2 GPM per nozzle higher flow rate vs. ELLD

#### Service and installation benefits

- Eliminates the recurring cost of replacement of MLLD
- Eliminates the need for annual line testing
- Eliminates the need for annual mechanical test



### FXV System-Mechanical Leak Detection and Testing

*The fastest line leak test available for hourly monitoring*

#### Performance

- Guaranteed to detect at a rate of 3 gph at 10 psi for 24 months from date of manufacture
- Fast test times enable the FXV to operate effectively in areas that experience extreme temperature changes
- Handles a variety of fuels including diesel

#### Service and installation benefits

- Adapts to applications using high-resiliency lines, such as flexible piping
- Installs and troubleshoots easily No special wrenches or tools



### Trapper™

*Your savings begin when the Trapper goes in*

#### Performance

- Specially designed screen blocks tank particulates from entering the fluid system, prolonging filter life
- Continuous slot design prevents accumulation and lodging of particles present in underground tanks, maintaining peak pumping performance

#### Service and installation benefits

- Reduces filter changes to as low as once per year per line, saving on labor and filter costs
- Reduces product spills and the potential for liability by reducing the number of filter changes
- Self-cleaning, non-clog design dramatically reduces maintenance costs



Veeder-Root has developed Flow Optimization Software to help guide you in choosing the best equipment to optimize flow at your retail petroleum site. Contact the Flow Resource to order your copy, or for more information on systems design or product specifications.

The Flow Resource **800-323-1799**

# Veeder-Root Offices

## North America

Veeder-Root  
125 Powder Forest Drive  
Simsbury, CT  
800-323-1799

## Asia Pacific

Gilbarco Veeder-Root Asia Pte Ltd  
750A Chai Chee Road  
#07-02 Suite 1  
Technopark@Chai Chee  
Singapore 469001  
Tel: +65 6448-7626  
Fax: +65 6448-7176

## Europe

Veeder-Root EMEA  
Hydrex House  
Garden Road  
Richmond, TW9 4NR  
UK  
Tel: +44 (0) 20 8392 1355  
Fax: +44 (0) 20 8878 6642

## Australia

Veeder-Root Australia  
20 Highgate Street  
Auburn, NSW 2144  
P.O. Box 6804  
Silverwater NSW 2128  
Australia  
Tel: +61 2 8737 7777  
Fax: +61 2 97379332

## Latin America

Veeder-Root  
125 Powder Forest Drive  
Simsbury, CT  
800-323-1799

## China

Veeder-Root Beijing  
Room 2202, SCITEC Tower,  
22, Jianguomen Wai Saje  
Beijing 100004, China  
Tel: +86 10 6512-8081  
Fax: +86 10 6522-0887

For information on systems design and product specifications in North America, call:

**800-323-1799**

For international sales and support, please contact your local sales office.

Red Jacket offers sales and applications support virtually anywhere in the world. We're committed to helping you improve your fueling profitability by developing new fuel delivery technologies that maximize fuel flow and deliver the best total cost of ownership. Please contact us at the closest location listed above, or visit us at [www.redjacket.com](http://www.redjacket.com).

North America for inside sales call

**1-888-561-7942**



800.289.7371 Acterra Group, Inc.

© 2004 Veeder-Root Company • 125 Powder Forest Drive • Simsbury, CT 06070 • USA  
Telephone: 860-651-2700 • Fax: 860-651-2719 • [www.veeder.com](http://www.veeder.com)

Job # 13810 P/N0576047-113 Rev B VRRS 2005 Printed in USA