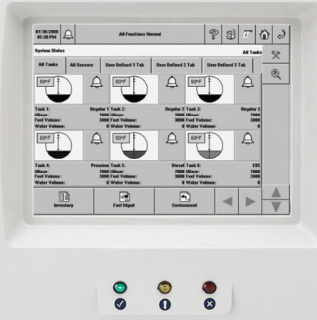


TODAY'S NEEDS AND TOMORROW'S CHALLENGES.



**OPTIMIZE. CUSTOMIZE.**

The TLS-450 offers a variety of options for access, control, data storage and business management. So you can tailor your system to fit the unique requirements of your operation. It's up to you, and we're here to make it simple.

**Option 1: Total Access**

Wherever you are, you can access or monitor your sites via any Web browser on your PC or PDA. And using the TLS-450 Direct Access™ Software on a PC, you can securely control and modify configuration, upgrades and diagnostics.

**Option 2: Total Control**

To make sure that all of your sites are under control, you can customize alarms, email notifications, built-in "Help" and dashboard views.

**Option 3: Extended Storage**

Back up your reports, alarms, compliance, inventory and delivery data for up to three years.

**Standard Models**

**Description:**  
 TLS-450 console with 80 column high speed thermal printer and 7" 4" full VGA LCD touch screen  
 Supports up to 64 sensors (up to 16 of the same sensing device)  
 Supports up to 16 probes. (Will support 32 probes by the end of Q3, 2009)  
 Includes built-in relay for overflow alarm.

**TLS-450 With Interface Modules:**

TLS-450 contains 4 compartments in which the universal sensor/probe or Input/Output interface modules can be installed interchangeably.  
 One module per compartment.



Description	Function
<b>LOW-POWER/HIGH-POWER COMPARTMENTS</b> (limit 4 modules per console)	
Universal sensor / probe interface module	16 input module, supports all probes and sensors
Universal Input / Output interface module	5 dry contact output relays / 4 low voltage dry contact inputs (2 high voltage inputs (6-60VAC)) Supports PLLD, pump sense and other standard functions. Supports tank overflow alarm.
<b>Built-in relay</b>	
<b>COMMUNICATION COMPARTMENT</b> (limit 5 modules per console)	
Cellular 96 interface module	Allows backing to most carriers (variable on model equipment)
Ethernet interface module	Provides connectivity to local and wide area networks (LAN / WAN)
USB interface module	Supports USB thumb drive for software upgrade or data backup
USB/Ethernet dual interface module	Provides connectivity to local and wide area networks (LAN / WAN) Supports USB thumb drive for software upgrade or data backup
RS-232* dual interface module	Provides two 9-Pin female D-Connectors for data transmission to POS terminal or computer
RS-232* / RS-485 dual interface module	Provides a 9-Pin female D-Connector and an 8-position RJ45 D-connector for data transmission to POS terminal or computer
Single RS-232* interface module	Provides a 9-Pin female D-Connector for data transmission to POS terminal or computer
<b>SPECIFICATIONS</b>	
Operating Temperature Range	32°F to 104°F (0°C to 40°C)
Storage Temperature Range	14°F to 138°F (-10°C to 70°C)

\* Supports RS-232 or Serial

To learn more, contact us at 1-888-561-7942, or visit [www.veeder.com](http://www.veeder.com)



©2008 Veeder-Root Company. P/N: 57047-140 Rev. B. Printed in USA.



TLS-450

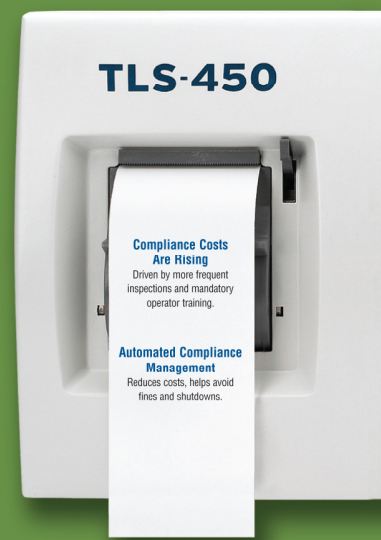
MONDAY, 8 P.M.  
 THE SUNSET IS GOLDEN.  
 SO IS YOUR COMPLIANCE STATUS.

AUTOMATED COMPLIANCE MANAGEMENT



INTRODUCING THE NEW TLS-450. READY FOR

**TLS-450**



**Compliance Costs Are Rising**  
 Driven by more frequent inspections and mandatory operator training.

**Automated Compliance Management**  
 Reduces costs, helps avoid fines and shutdowns.



#### Fewer and faster service calls

- ➔ **Remote diagnostics**  
Address problems quickly and accurately. Remote programming if needed.
- ➔ **Custom alarms**  
Customized instructions avoid unnecessary service calls.



#### Remote or local site management 24/7

- ➔ **Direct Access™ software**  
Same interface for local and remote access opens a virtual window to your site through a PC.
- ➔ **Flexible networking options**  
Seamless TCP/IP configuration and integration to local and wide area networks.
- ➔ **Email notification**  
Instant notification of alarms and reports drives appropriate action when needed.
- ➔ **Cost effective site and business management from anywhere**  
Allows you to more efficiently manage your inventory by putting the data at your fingertips.

## AUTOMATED COMPLIANCE MANAGEMENT

#### Before TLS-450



Maximize Uptime, Avoid Fines and Cut Costs

TIME CONSUMING	EFFICIENT
MANUAL	AUTOMATED
PAPER	ELECTRONIC
MISTAKE-PRONE	MISTAKE-PROOF

Today, proving compliance is a manual process and reports are paper driven, which are costly and can lead to errors.

#### Rising Costs of Compliance

Enforcement of regulatory requirements and new mandatory operator training increases the cost of compliance.

#### Avoid Fines and Shutdowns

Due to the new enforcement of compliance regulations, operators have experienced fines and shutdowns due to lost, missing or incomplete compliance reports.

#### Stay in Compliance

As a result of these new regulations, there is now a need for more comprehensive on-site compliance reporting and automated compliance management.



#### With TLS-450



With the TLS-450, proving compliance is an automated process and reports are electronic, which makes reporting more efficient and accurate.

#### One-Touch Compliance Reporting

The TLS-450 provides inspector ready one-touch compliance reports that are available on demand through the environmental reports button.

#### Prove Compliance 24/7

With the TLS-450 Direct Access™ Software, you will be able to access your compliance reports via any web browser on your PC or PDA.

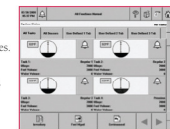
#### Three Years of Compliance History

The TLS-450 can store up to three years of compliance history, which helps meet all regulatory requirements and provide the most comprehensive reports possible.

GOLDEN ANY WAY YOU LOOK AT IT.

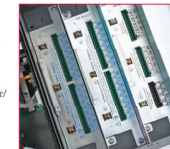
#### Mistake-proof operation

- ➔ **Intuitive GUI interface**  
Brings transparency to each action – avoids costly mistakes.
- ➔ **Onboard help function**  
Supports the user along each step – fewer calls to service.
- ➔ **Custom alarm management**  
Ensures fast and accurate action when it counts.



#### Flexible and upgrade-ready

- ➔ **Advanced processing power and architecture**  
Easy future integration of compliance needs and business services.
- ➔ **Highly flexible configuration**  
Increased sensor and probe capacity with universal sensor/probe input/output cards. This significantly reduces the number of console interface modules required.
- ➔ **Remote upgrade**  
Fast and cost efficient upgrades.



#### Easy upgrade to TLS-450

- ➔ Same footprint as TLS-300 and TLS-350 models; uses existing probes and sensors for a perfect fit and seamless integration.



As environmental requirements change, the TLS-450 platform keeps you in total compliance, helping you monitor your sites and fuel inventory wherever you happen to be. So you can protect your assets, as well as the land, air and water. At the end of the day, that's what counts.

